

To The Point

A message from our President

In these days of Northern Rock uncertainty, a shaky Footsey, earthquakes and Global Warming we all need a place to unwind and enjoy healthy exercise and good company. I am delighted to say that after well over 100 years our club is still providing that sanctuary for its members; a place where the only "spin" you'll find is on the courts.

We continue into 2008 maintaining our traditions of striving for the best facilities, encouraging keen competitive and social play for all ages, but most of all creating a warm and friendly atmosphere in and around the club. Of course the success of our club, not only relies on its hardworking staff but also many "unsung heroes" who give up their time to help the club. To all of you I send my thanks. This also is an opportunity to thank Sue Reesby for all her efforts and our sponsors and contributors to this publication for their continued support.

Peter Collinson



Socially Speaking.

Come hail, rain or shine (well nearly) they're here at the weekend – the Social Players. Forget the fine weather only players, the indoor court only players, the match only players, the 'it's too windy' players, these players are what a tennis club was invented for. Socializing, friendly, recreational play, fun and games in the great outdoors – but with a pinch of competitiveness too! For years our own president, Peter Collinson, has prepared the courts and orchestrated (well he IS musical) these afternoons and everyone joins in in the spirit of it all. Various social tournaments are arranged each year (for example at Christmas – run by Peter) and are popular and enjoyed. Enjoyment is the key word. All new members who join



in for a taster soon become one of the gang. The picture shows Christine, Jack and Helen (35 years on court at West Bridgford between them)

Junior Grand Prix 2008

Seen here at the presentation ceremony of last years event are Jill Shelvey and Kay Wakefield.



This well respected partnership on the Junior Grand Prix circuit will be in charge again in July when once more we host this prestigious event. Past competitors have reported that the success over the last 13 years can be attributed to the careful organisation and the club's warm hospitality.



West Bridgford competitors relax between matches!

The Club has been Sued !!!

On May the 31st we the club, will be saying farewell to Sue Reesby.

Sue is retiring after nine years in her post as joint manager; a job which from the early days of our new development (1999) she, along with David Carter and an enthusiastic team, has helped to bring the club from its infancy to what you see today.

Sue has been and still will be a valuable member of various teams and we will, therefore, be seeing her quite a lot in weeks and years to come.

Whatever she does, Sue will put her usual wholehearted effort into it to keep in shape. As husband Phil is now super fit again (hip-hip-hooray) they will also have more time to pursue their favourite outdoor activities of walking, cycling and travelling abroad.

But also perhaps –see you on the 1st tee?? We wish Sue all the very best for the future.

Well Hello Debbie!

The committee is pleased to announce the appointment of Deborah Clothier as successor to Sue. Deborah arrives here from being the administrator to the Notts. LTA and will take up her post on 2nd June. We can assure her of a warm welcome.

To The Point - April 2008

Contents

Page 2	Club Together Social Events
Page 3	Page Three and all that Photos and Features
Page 4	Tennis Matters Senior Tennis
Page 5	The Net Post Junior Tennis High Achievers
Page 6	On The Line Articles & Features
Page 7	On The Line Congratulations Puzzles
Page 8	What's Next Calendar of Events Sponsors

Club Together



Walks



Cycling



Skittles



Themes



Dances



Quizzes

Japanese Evening

on 1st March which was hosted by our club members Meg, Yuko, Mutsumi, Yoko and Shiho was a glittering success. The ladies worked tirelessly in the kitchen and provided a great variety of colourful, exotic and delicious dishes from the Orient. After their hard work Meg and Shiho changed into Kimonos which certainly added to the glamour and charm of the evening.



Tickets for the evening sold in record time and well before the event; the lucky few voted it a "Gourmets Delight" Helping a deserving charity, Cystic Fibrosis, £ 63 was raised by raffling a Japanese Bonsai tree which was won by Cathy Clark.



The Winter Walk in February was well supported again and is proving extremely popular. Despite a little boggy and muddy conditions in places (we coped), the company and the scenery was par excellence. We dined at the Sycamore Inn at Parwich.

May 11th is the date of our spring walk. This should be very interesting at approximately ten miles. Melbourne – Bree- don – Staunton Harold – Calke – Ticknall – Melbourne. Thank you all for your much appreciated support and re- member – ALL WELCOME!!



Further Events—Home and Away from the Club

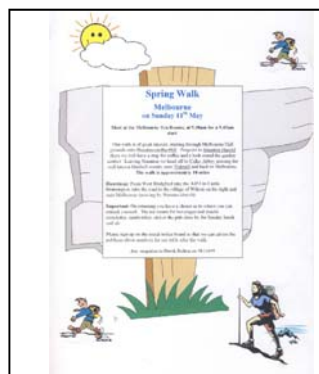
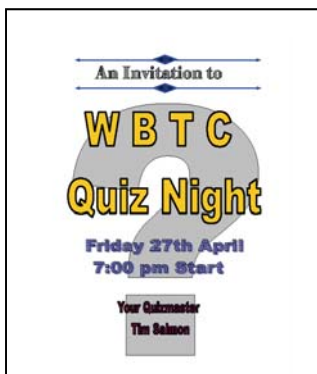
Our ever popular Quiz Night will be held on Friday 27th April with Tim Salmon in the chair. Questions cover music, politics, current affairs, sport and trivia; truly something for everyone.

The Spring Cup will be played on Saturday 3rd May and entry forms will be available from the 1st April

The annual Spring Walk will be on Sunday 11th May, meeting at the Melbourne Tearooms, Melbourne.

On Sunday 22nd June we will be meeting at The Hire Centre, Tissington Trail for our cycle ride.

On Saturday 28th June a Ceilidh to celebrate a visit of "The Evergreens" from the Emerald Isle



Officials	Committee	Staff	Mr. N. Tanna
President and Chairman: Mr. P. Collinson	Mr. T. Hubner	Mr. D. Bolton	Coaches
Treasurer: Mr. P. Scott	Mrs. P. Richardson	Miss. S. Cooper	Gareth Billingham
Secretary: Mrs J. Shelvey	Mr. J.J.F. Robinson	Mrs. V. Crowther	Gareth Griffiths
Tennis Development Officer: Mrs. L. Whitehead	Mr. D. Wakefield	Mr. K. Patterson	Matt Wildt
Managers: Mr. D. Carter & Mrs. S. Reesby		Mr. G. Radford	

Page Three and all that!



Tim Salmon, our genial quizzmaster is seen here presenting the prize to the Roger Bray's winning team last year.

Tim, who has been quizzing us for well over ten years is Head of Careers at the Nottingham Bluecoat School and invariably has to use his disciplinary experience to keep our contestants in check.

He no doubt spends many hours in preparation, tailoring his questions to the "mixed" intellects of our club members, for this we thank him.

We welcome Tim again to our next Quiz Evening on Friday 27th April.

The Irish are coming!
After last years visit to Dublin by a "select" team of ageing has-beens from the club and county, we are returning their hospitality over the weekend of 28th—29th June. Matches will be arranged during their stay and the highlight will be a Ceilidh, (Nottinghamshire style). Seen below is David Carter enjoying an after-match Guinness in Dublin.



These lovely Edwardian ladies, Verna and Maggie, were pictured at the 1906 celebrations! We intend to move on 30 years next year, when we hope to hold another theme day. The 30's. The decade of the glorious years of British tennis, the jazz age, the Art Deco period - style and sophistication was to the fore - so we should be all up for that then!!

Healthy Eating

Lemon Drizzle Cake

Ingredients:

4 oz margarine or butter
6 oz self raising flour
1 teaspoon baking powder
6 oz caster sugar
2 large eggs
6 tablespoons milk
finely grated rind of 1 lemon

Method:

1. Beat all ingredients together
2. Put in 2lb loaf tin and bake until golden - 180 (160 fan) - 30 - 40 minutes
3. Make icing - 2 oz sugar mixed with the juice of 1 lemon
4. Spoon over the cake whilst still hot and leave to cool

Margaret Shaw (Cakes available at the Club!)



Tortillas stuffed with chicken and salad

Ingredients:

1 teaspoon olive oil
1 small onion, chopped
1 red pepper, sliced
1 boneless, skinless, chicken breast, sliced
1 x 400g can red kidney beans, drained and rinsed
1 tablespoon light creme fraiche
3 small flour tortillas
1 carrot, peeled and grated
1 x 60g bag mixed salad leaves
salt and freshly ground black pepper

Cooking Instructions:

1. Heat the oil in a non-stick frying pan. Add the onion and red pepper and fry for 2-3 minutes, until softened. Add the chicken and fry for 3-4 minutes until browned and cooked through.
 2. In a bowl, mash together the kidney beans and creme fraiche.
 3. Divide the bean mixture between the tortillas, spoon over the chicken mixture, add the carrot and salad leaves season well, roll up, cut in half and serve.
- Serves 2

Penny Richardson (provider of meals for the Club!)



Tennis Matters

For the older player!

Success for the Club— last year was the most successful so far for the clubs veterans teams in the National Competitions. Four of our teams reached the semi-finals in their events with two reaching the finals at Brierley Hill in November.

The "Junior" (40/45) mixed team of Tony Alexander playing with Elaine Masters and Peter Whitehead with Ann Brown lost a closely contested final to the Leicestershire Club.

The "Senior" (50/55) mixed team of Gerry Radford and Margaret Fincham and David Carter partnering Jill Shelvey won



Peter Whitehead-Tony Alexander-Ann Brown-Elaine Masters
West Bridgford Tennis Club
Runners-up Nation Club over 40's Mixed Doubles

the national event beating West Hants Club three rubbers to one. This is the second time that this team has won this event in the last three years.

LTA Veterans Open Tournament

In January the club hosted this

event and club winners were Tony Alexander who beat John Taylor in the singles over 50's, 6-2 6-2 and in the 50's doubles partnered by Peter Whitehead beat a pair from Yorkshire, Dave Brown & Mike Breslin, 6-1 6-4



Gerry Radford—Margaret Fincham—Jill Shelvey(Captain)—David Carter
West Bridgford Tennis Club
National Champions over 50's Mixed Doubles

Team Practise Nights

The Men's and Ladies weekly practise evenings begin after Easter at 6-30pm.

Ladies Night starts on Wednesday 2nd April and Men's Night on Thursday 3rd April.

All team and prospective team players welcome.

Summer Holiday Adult Coaching

The popular adult summer coaching courses during the school holidays will continue this summer.

A beginner course will be run on Wednesdays from 6-30pm to 7-30pm and for improver standard two courses, on Wednesday from 7-30pm to 8-30pm and Thursday from 6-30pm to 7-30pm. All courses will be held indoors for 5 weeks starting on Wednesday 30th July and Thursday 31st July. Leaflets available after Easter.

Tennis Tip

Baseline court position—Beginners & Improvers

When playing a point, I encounter a lot of players who maintain a position well inside the baseline (see diagram A)



* Player position

When the ball is played deep rather than move backwards and let it bounce they volley the ball sometimes even when it is going out! In short they are making it difficult for themselves as a volley from the back of the court is often hard to control.



By playing from just behind the baseline (see diagram B) you will make it easier to let the ball bounce more effectively in front of you. You will find that it is far better moving forward to the ball rather than moving backwards and probably putting yourself off balance.

Gaz Griffiths—Coach

The future of our club

As members we are very privileged to have the wonderful facilities we enjoy throughout the year - facilities that no other tennis club in this county can match. But with a large coaching programme and numerous match play opportunities, alongside a growing need for members to play indoors and out all year round, the opportunity to have additional courts and parking facilities is something I would like to see in the future.

In an ideal world 3 or 4 indoor courts would be fantastic but if it were only possible to have an additional 3 outdoor courts this would be a great asset for the future. The club has set up a sub committee to look in to the long term future of the club and the prospect of further courts is certainly one of their priorities.

To remain one of the leading clubs it is vital to continue running a comprehensive coaching programme and quality competitive opportunities for all ages and abilities. Additional courts would allow expansion of the above but still leave ample opportunities for the many club members who do not want coaching or match play to come along and play with friends.

In the near future as a progression from the Disability Programme we run, I hope to organize a tournament for players with a learning disability. At present there is only one tournament organized per year so we would be one of the first tennis clubs in the country to offer such an event.

I believe it is important to initiate new ideas in to the club and over the last 10 years this is something I think we have achieved. The future will continue to see many more new ideas introduced, ensuring this club offers more benefits to it's members than any other. Of course if any member should have any thought or suggestions on future developments please talk to me.

Lesley Whitehead—Tennis Development Officer

The Net Post

Junior's Corner

Summer Holiday Junior Programme

The Summer Holiday Programme will run from 28th July to 29th August.

Activities will include Under 5's sessions, mini tennis clinics, tennis clinics and tournaments. As in previous years there will be a chance to attend our popular tennis camp from 11th to 15th August for 10 to 16 year olds of all standards and the mini tennis camp from 26th to 29th August for 5 to 10 year olds who are playing red & orange mini tennis. Leaflets available after Easter.

Non-Members Open Day

On Sunday 15th June we are organizing a free open day from 1-30pm to 4-00pm for prospective new members. Our coaching team will be on hand to provide free group coaching. If you know any one who would like to start playing again or have a go for the first time then invite them to come along. All standards welcome. 1-30pm to 2-30pm – 3 to 10 years
2-30pm to 4pm – 11+ years and adults

Junior Match Play Tournaments

The new match play tournament entry forms are available from reception. These include events from April to September for juniors with an LTA rating from 8.2 to 10.2.

If you would like to start playing but don't have a rating then speak to Lesley or your coach for more information.

Mini Tennis Tournaments

If your child can serve underarm and rally at mini tennis red, orange or green level then now is the time to start entering our mini tennis competitions. The new Spring and Summer entry forms are available from reception.



MANOR PHARMACY

Manor Pharmacy
contribute as sponsors to the
Mini-Tennis Programme



G4 Security generously
contribute as sponsors to
the Disability Programme

High Achievers

Michael Clarke – Michael only started playing tennis 3 years ago when he was recommended by his school Derrymount Special School to start attending the Disability Programme at the club. He was soon invited to attend the East Midlands Special Olympics squad also at West Bridgford and has been a regular participant at both groups since. In 2006 he attended his first National Training weekend at Welwyn Garden City and in the same year also entered his first National Learning Disability Tournament where he won a singles gold medal in his rating division. This was a fantastic achievement, but not one to be satisfied with this success he surpassed this achievement in 2007 by winning a gold medal in his singles even though he was now rated two divisions higher and then followed this with a gold medal in the doubles with fellow West Bridgford player Joseph Eccles. At the Nottinghamshire LTA Awards evening Michael was rewarded for his efforts by being presented with a trophy as the runner-up in the Most Improved Player section by Roger Draper, Chief Executive of the LTA



Haruna Horie – Haruna joined the club in September 2003 when she first started on our mini red coaching groups. Since then she has progressed through the mini tennis performance programme and is now moving on to full tennis. Such is Haruna's enthusiasm to improve, she can be seen most nights at the club either playing in a squad or hitting with her mother. She is also very keen to play competitively and has entered numerous mini tennis tournaments at all levels over the years and now having attained an LTA rating is entering many tennis events around the county. In addition she has represented the club in league matches and was part of the Rushcliffe team that won the Nottinghamshire Youth Games County Finals last year. In December Haruna's efforts and achievements were rewarded when she won the Club Coaches Award 2007 for Junior Achievement.



On The Line

A Tennis Great (and still Forest's top goalscorer!)

Arthur Grenville Morris was a professional footballer. He was transferred to Nottingham Forest from Swindon Town in December 1898 for £200 - a very large sum in those days. As centre forward and, later, inside left, Gren was Forest's top scorer for 7 of the next 10 seasons, and captained the team for most of them, including the 1906-07 season when they gained promotion to Division 1. He played 21 international matches for Wales between 1898 and 1910, scoring 9 times. A hundred years later Gren is still Forest's leading goalscorer with a grand total of **217 goals**, a record unlikely ever to be beaten. (The next highest all-time scorer is Nigel Clough, with 131).

Gren joined the West Bridgford LTC shortly after arriving in Nottingham, when the club was still sited on Millicent Road. He won the club championship in 1905 and when the club moved to Wilford Lane in 1906, helped to build the new clubhouse. He won the club championship again in 1907, and continued playing football in the winter and tennis in the summer whilst building up his business as a coal merchant.

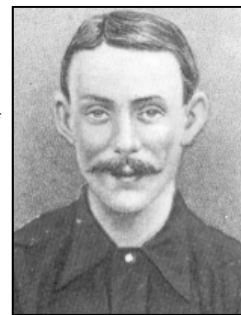
In 1913 the USA played Germany in the semi-final of the Davis Cup at what is now the Nottingham Tennis Club in the Park. The American doubles pair wanted some practice before the match, so Gren and another Notts. player took them on - and won a set. He was that good.

Gren had had a house built on Wilford Lane about that time, and it is still there today, opposite the Little Bounds road. He retired from football at the end of the 1912-13 season, and planned to continue playing competitive tennis. But petty jealousies were afoot in Notts tennis (some things never change!), and he was banned from amateur tennis because he had been a professional at another sport. This seems grotesque now, but social snobbery was alive and only too well then. So, on the advice of a fellow member of WBLTC, who also said

"I will be your first pupil", Gren took up tennis coaching. At first he hired a court at the club, but then he laid down a red shale court in his garden, and two more across the road where the houses on the corner of Little Bounds and Wilford Lane now are, plus a practice wall. Red shale was the only type of hard court available then. It was good to play on when well maintained, but frost sensitive. So every time frost was forecast Gren would be out throwing salt on his courts. And the next morning his would be the only courts playable for miles around. So he did a roaring trade with hiring them out.

Gren was the only tennis coach in Notts for the next 35 years, and he taught many people to play the game. You could always recognize Gren Morris pupils by their long smooth swings on their groundstrokes, and their "hammering in a nail" volleys. Amongst his successes were Freda James (Hammersley), who won the Ladies Doubles at Wimbledon with Kay Stammers in 1935 and 1936; and his own grand-daughter Ruth Bennett (Illingworth), who is the current over 75 World Ladies Doubles Champion, with Rita Lauder. Ruth now lives in Tunbridge Wells, but she played all her county tennis for Notts - usually with Jean Bee, another of Gren's pupils.

Gren coached Derek Bolton and me, as well. In 1959 Forest reached the final of the F.A. Cup. Full of excitement I said to Gren- "Are you going down to Wembley next week?" "No" he replied "after all, its only another game of football". Forest won; 6 months later Gren died, aged 82. A great sportsman, dubbed 'the immortal Gren' by the Forest club, and reputed to never have retaliated or made a foul tackle in his life.



Jeff Robinson.—President 1981 to 1983

Who's Who at the Club?

Jack Brown - 85 Not Out!

Jack was born on the 23rd of February 1923 at Sneinton, Nottingham the fifth son of a local fishmonger and greengrocer Sidney and Lily Emma Brown. Three girls followed the five boys. His early growing up period, spanning the 1929 and early 1930's Depression, was so completely different to that of today. Cramped living accommodation, lighting by candlelight, very small coal-fired range for heating water and cooking; no centrally heated bedrooms, no TV and no telephone! Public transport was by tramcar, bread was freshly delivered by horse drawn van, and a car was rarely seen.

Tennis was something Jack saw, usually clips of the Wimbledon Finals, on the News Reels at the local cinema.

Jack attended St. Philip's Junior; Sneinton Boulevard and St. Mary's Senior in the Lace Market and joined the YMCA London Road and The Boys Brigade for after-school interests.

All his brothers saw active service in the 2nd World War; three in the Army, one in the Navy. At 18 years of age, in 1941 he volunteered for the RAF in which he served until 1946, overseas 1941-1944 including the North Africa Campaign.

After the war one of his brothers introduced Jack to tennis on the public courts at King Edward Park on Carlton Road and those at Valley Road. Later playing at Highfields with friends from the Central YMCA in the 1950s and occasionally a game during holidays but unfortunately work as a Company Secretary/Accountant for a large group of private companies monopolized most of his time.

Eventually in March 1986, Jack and his wife Edna, who he first met in 1944, came to reside at the Rivermead flats on Wilford Lane. The windows of their fourth-floor end flat in Princeton House gave a view of the old clubhouse of WBLTC and the courts adjacent to it and at the weekends he had a perfect view

of a few "not so young" members playing doubles. This inspired Jack to pluck up courage to walk over the road and, with his very old racquet tucked under his arm, asked if he could join in. The cluster of mature ladies, and the odd man, dragged Jack on to the court. He had ever been so popular!

He joined the West Bridgford Tennis Club and has played Social Tennis ever since [the membership of which has escalated dramatically from the days when Jack first wended his way along Little Bounds].

Jack tell us that he is still "enjoying the company of a group of very nice and friendly people, now of a much wider range of ages, who tolerate my occasional rumblings and have helped to keep me in reasonably good fitness, although I should also be grateful to be blessed with good genes and the occasional help from the medical profession.

My daughter, Penny Watson, gives me the odd singles and I hope my little legs hold out; one of the ladies that I used to see from my window was dear Flo Hemming, who used to cycle to the Club and still played a fair game at the age of 90. I hope that I can emulate her and that I am not tempting providence!"



On The Line

Haven't they done well!!



Congratulations to Gaz Griffiths and wife Annabelle on the birth of their son Noah on Wednesday 30th January.

Congratulations to Edward and Anna Bowerman on the birth of their daughter, Emily on 11th February.

Congratulations to Lesley Whitehead.

Lesley recently won two awards for her achievements with the Great Britain team who competed in China in 2007. She won the Notts. LTA Coach of the Year and the Nottinghamshire Sports Awards Coach of the Year.

Congratulations to David Wakefield.

At the recent Notts LTA annual awards, our very own hedge cutter, gutter unblocker, steward, scaffolder, electrician, joiner and sometimes airline pilot, won the runners-up award for Volunteer of the Year. Well done David, but we must all wonder what the winner does!!

Congratulations to our Ladies First Team who won the Winter League 1st division, retaining their title.



CARA 1994 - 2008

Our lovely black Labrador, our club mascot, sadly died on 5th February. She, of course, was one of the Wakefield family. We will miss her visits, particularly at major events such as the Junior Grand Prix, when she would methodically visit each diners table on our patio to receive a part of some-ones lunch – it was always those appealing eyes that won the day! Bye, Cara.

Dells' Caption Competition



Just jot down your witty caption for either or both of the pictures shown above and hand them to reception before 30th April. Winners will receive a "Brand New" top quality tube of tennis balls!



Spot the Difference

Mainly for our younger members.



Study the right-hand picture carefully and write down **nine** differences you spot from the left-hand original picture. Hand in your entry (1 to 9) in an envelope with your name by the 30th April. **Chocs. for the winner!!!**

On The Line

The Club's New Sweatshirts



Club Sweatshirts

Order your new New Club Sweatshirts now!
Available in Black, White and Navy
Unisex sizes X Small to XX Large
Only £13.50
Please place orders at the club by 30th April 2008
There is a Medium and a Large sample available at the club to try on for size!



All Sweatshirts come with the club logo.

Club Sponsors

J. Looker & Sons Ltd

Carton Manufacturers

Palmer Drive

Bessall Lane

Stapleford - Nottingham

NG9 7BX

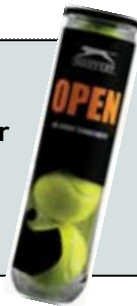
Telephone: 0115-939 5054

Fax: 0115-939 5978



Tennis Balls for sale

Tennis Balls
Slazenger Open Tennis Balls available for bulk purchase
Boxes of 6 dozen balls
Only £51.00



What's Next

Competition & Social Calendar

April 2008 - September 2008

Start of Outdoor/Summer Season (with cream teas)				
Saturday	05-Apr	Start of Outdoor/Summer Season (with cream teas)	1.30 - 4.00	Outdoors
Saturday	19-Apr	Mini Challenge - Orange	1.00 - 5.00	Indoors
Friday	25-Apr	Quiz Night	7.00 - 9.30	Clubhouse
Sat-Sun	26-Apr/27-Apr	Invitational Vets Tournament	10.00 - 6.00	Indoors
Saturday	03-May	Spring Cup (restricted entry qualification)	1.00 - 5.00	Outdoors
Sunday	11-May	Club Walk - Melbourne, Derbyshire	9.45am Start	Away
Sunday	11-May	Mini Red Tournament (8 & under)	10.00 - 12.30	Indoors
Tuesday	27-May	Mini Green Tournament (10 & under)	10.00 - 1.00	Outdoors
Tuesday	27-May	LTA Junior Challenge 12 & Under	10.00 - 2.00	Outdoors
Thursday	29-May	Mini Orange Tournament (9 & under)	10.00 - 1.00	Indoors
Saturday	07-Jun	Junior Club Finals Day	9.30 - 1.30	Outdoors
Sunday	08-Jun	Mini Challenge - Red	10.00 - 2.00	Indoors
Sunday	22-Jun	Cycle Ride at Tissington	10.15 Start	Away
Wednesday	25-Jun	Ladies Summer Charity Doubles	10.00 - 3.00	Outdoors
Saturday	28-Jun	Ceilidh - VENUE TO BE ANNOUNCED	7.30 Start	Away
Sunday	29-Jun	Club Mixed Doubles Tournament	10.00 - 3.00	Outdoors
Sunday	06-Jul	Mini Green Tournament (10 & under)	10.00 - 1.00	Indoors
Saturday	12-Jul	LTA Junior Challenge 14 & Under	4.00 - 8.00	Outdoors
Sunday	13-Jul	Club Finals Day	10.00 - 2.00	Outdoors
Sunday	13-Jul	Mini Challenge - Green	10.00 - 2.00	Indoors
Sun - Sat	20-Jul-26-Jul	Junior Grand Prix	9.00 - 6.00	In/Out
Sunday	03-Aug	Mini Orange Tournament (9 & under)	10.00 - 1.00	Indoors
Sunday	10-Aug	Mini Red Tournament (8 & under)	10.00 - 12.30	Indoors
Mon - Fri	11-Aug-15-Aug	Junior Summer Camp	10.00 - 4.00	In/Out
Sunday	17-Aug	Mini Green Tournament (10 & under)	10.00 - 1.00	Indoors
Tues-Fri	26-Aug-29-Aug	Mini Summer Camp	10.00 - 1.00	In/Out
Wednesday	10-Sep	Ladies Social Doubles	10.00 - 3.00	Outdoors
Saturday	20-Sep	Presidents Cup Mixed Social Doubles	1.30 - 4.30	Outdoors

hawthorneparkes

Insurance & Risk Management Solutions

Please contact Ray Holden for advice on Business Insurance.

Tel : 0115 988 4207

email : rayholden@hawthorneparkes.co

Authorised and Regulated by Financial Services Authority



Steel Fabrication and Architectural Metalwork

LHW Building, Iremonger Road, Nottingham, NG2 3HU

Telephone +44 (0) 115 986 1247

email: sales@east-midlands-fabrications.co.uk

www.east-midlands-fabrications.co.uk

Sense
Financial Solutions

Nick Manders

Independent Financial Adviser

Office Tel/Fax: 0115 940 5438

Mobile: 07753 774673

Email: nick@itmakesense.net

43 Walcote Drive, West Bridgford, Nottingham, NG2 7JQ

Sense Financial Solutions Ltd is an appointed representative of Mint Financial Services Ltd, which is authorised and regulated by the Financial Services Authority.